

# Corrugated & Smooth Flow fittings

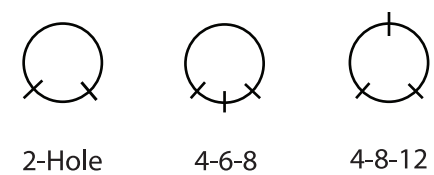
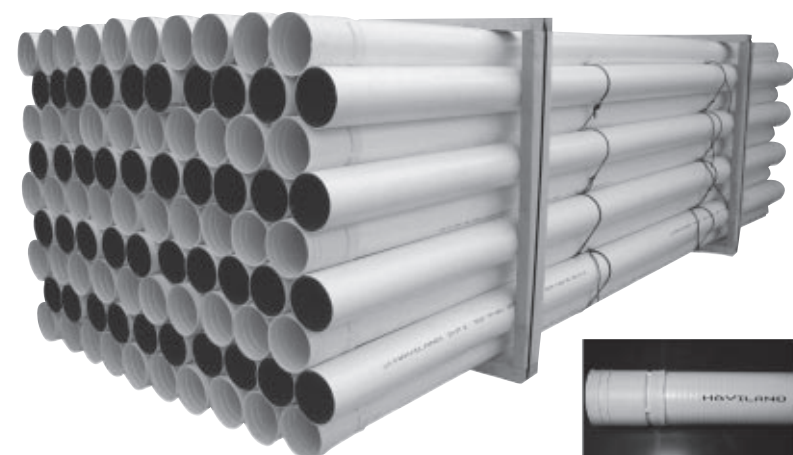
# Tri-Wall Pipe

NOTE: CORRUGATED FITTINGS AVAILABLE IN 2" - 24"  
 \*FOR A FULL CORRUGATED FITTING LIST SEE OUR CATALOG OR YOUR SALES PERSON

NOTE: OTHER SMOOTH FLOW FITTINGS, STRUCTURES, AND SYSTEMS FABRICATED UPON REQUEST, UP THROUGH 60"

Size	Length (ft)	Description	Hole Diameter
3	1380	Tri-Wall Solid	
3	1380	Tri-Wall 2 Hole	1/2"
4	900	Tri-Wall Solid	
4	900	Tri-Wall 2 Hole	1/2"
4	900	Tri-Wall 4-6-8	5/8"
4	900	Tri-Wall 4-8-12	5/8"
6	390	Tri-Wall Solid	
6	390	Tri-Wall 2 Hole	1/2"

Tri-Wall pipe is a three layered high density polyethylene sewer and drain pipe. With a welded bell for consistent fit, this product is truly revolutionary. It provides better impact resistance, added strength and is easier to handle than conventional sewer and drain pipe. Consisting of a white exterior and a black interior, tri-wall pipe meets or exceeds ASTM F 810 when installed in accordance to ASTM F 481. It is available in 3", 4" and 6" diameter, in 10' lengths and bundled in pallets. Thirty pallets can be shipped per truckload on 53' trailers. 4" 2 - Hole Tri-Wall is available with 5/8" holes upon special request.



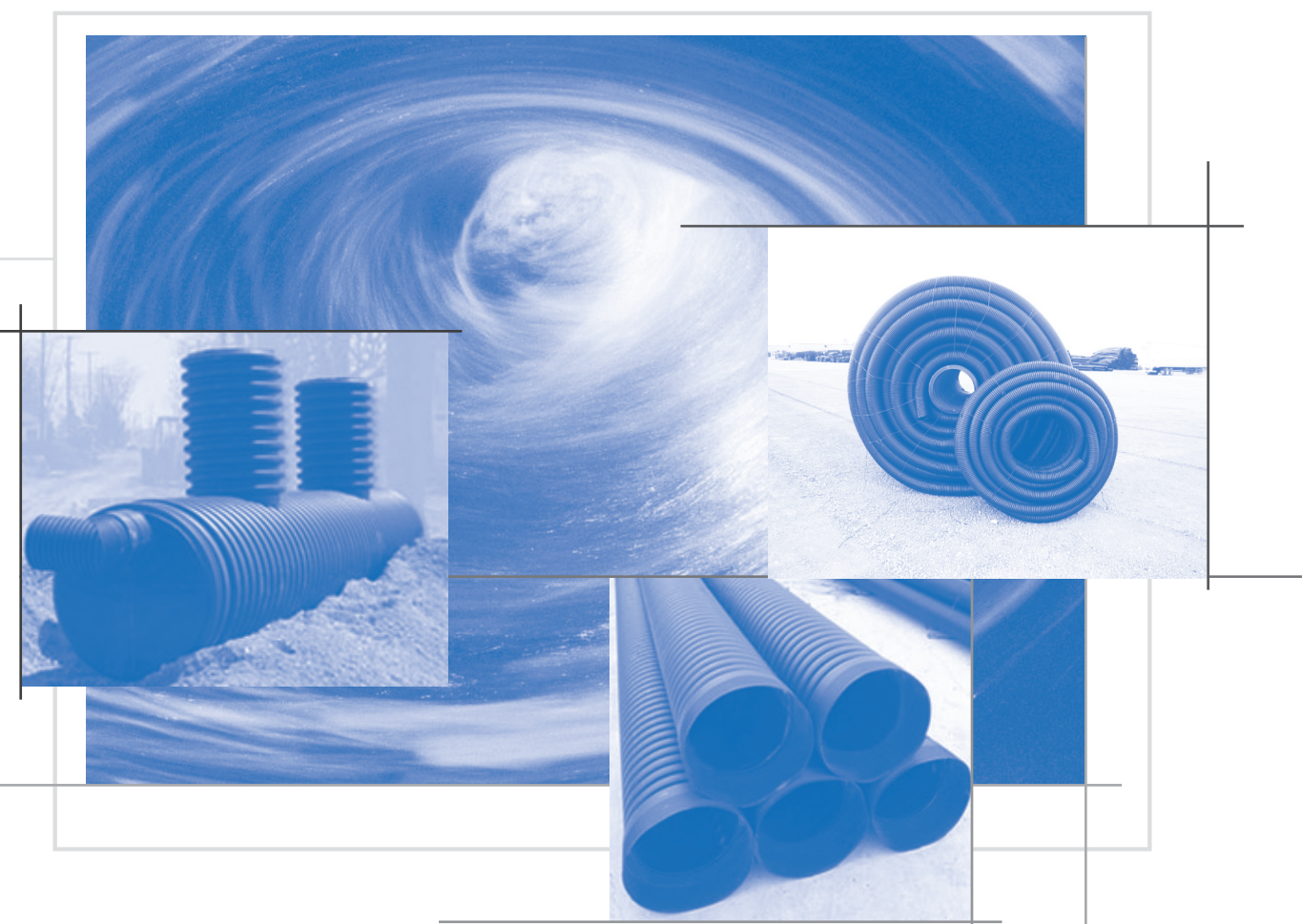
| 4" x 900' Tri-Wall Solid |

Haviland Drainage Products Co. offers a wide variety of pipe, Smooth Flow and corrugated fittings and additional drainage accessories. For a complete listing of all our current products, please visit our website at [www.haviland-drainage.com](http://www.haviland-drainage.com) or call us at the number listed below.

100 West Main Street  
 P.O. Box 97 Haviland, OH 45851-0097

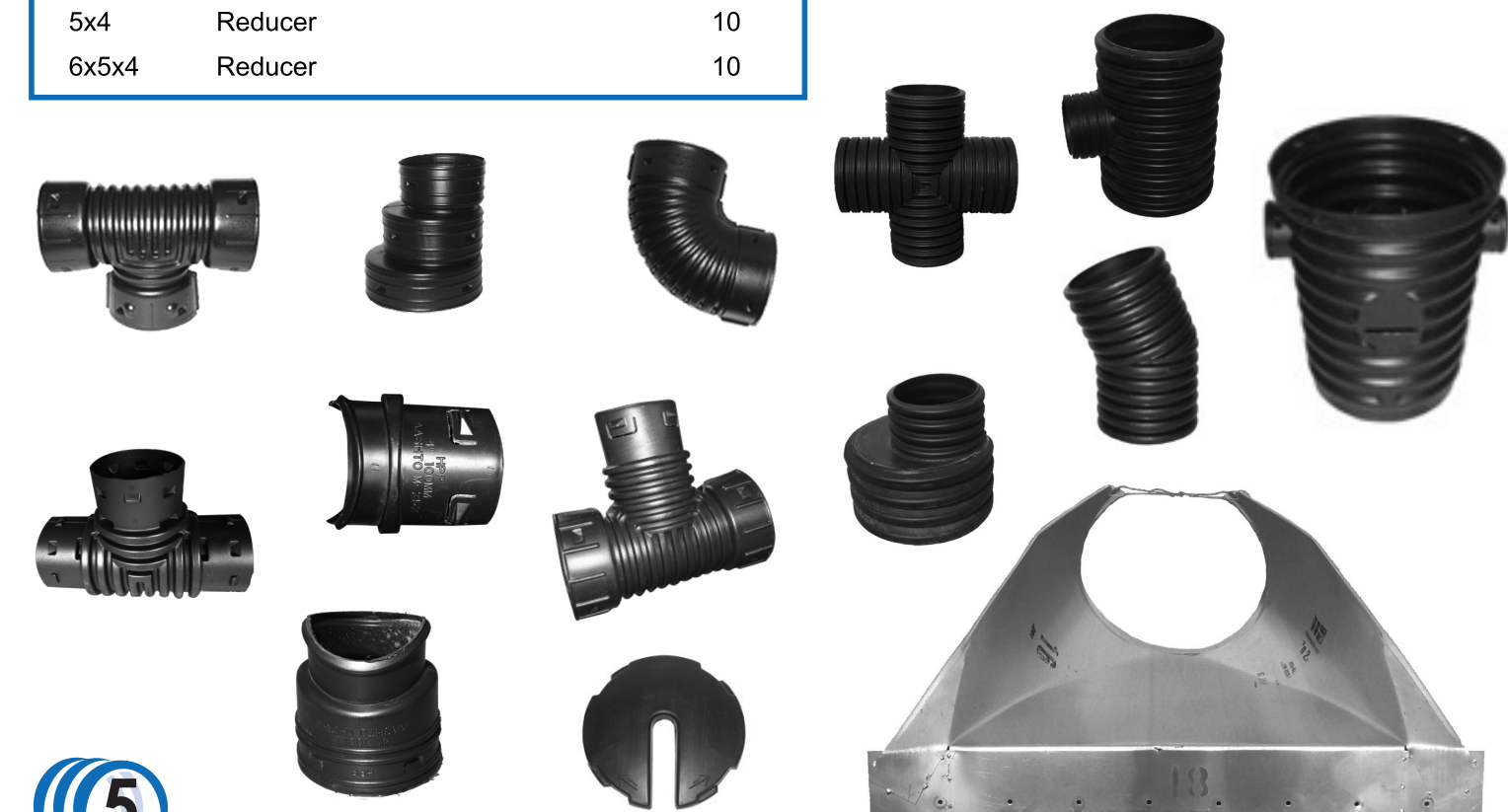
PHONE: [419] 622.4611  
 FAX: [419] 622.6911

[www.haviland-drainage.com](http://www.haviland-drainage.com)



Size	Description	#/Bag
4	Tee	25
4	Combo Tee (3"External/4"Internal)	25
4	Blind Tee	25
4	Internal Tee	10
4	Internal Tap Tee	50
4	Short Tap Tee	50
4	Long Tap Tee	50
4	Internal Coupler (Injection Mold)	50
4	Internal Coupler (Blow Mold)	50
4	Snap Coupler	50
4	Split Coupler	50
4	Wye	10
4	401 End Plug	100
4	402 End Plug	100
4	402 Perf End Plug	100
4	Elbow	25
4	Clay to Plastic Adaptor	50
4	PVC to Plastic Adaptor	50
4x3	Reducer	25
5x4	Reducer	10
6x5x4	Reducer	10

Size	Description
4x4 - 60x60	Tees - Plain End
4x4 - 48x48	Tees - Bell End
6x4 - 60x48	Reducing Tees - Plain End
6x4 - 48x42	Reducing Tees - Bell End
4x4 - 60x60	Wyes - Plain End
4x4 - 48x48	Wyes - Plain End
6x4 - 60x48	Reducing Wyes - Plain End
6x4 - 48x42	Reducing Wyes - Bell End
6x4 - 60x48	Reducers - Plain End
6x4 - 48x42	Reducers - Bell End
4x4 - 48x48	Double/Cross Tees - Plain End
4x4 - 48x48	Double/Cross Tees - Bell End
4 - 60	22 1/2° Elbow - Plain End
4 - 48	22 1/2° Elbow - Bell End
4 - 60	45° Elbow - Plain End
4 - 48	45° Elbow - Bell End
4 - 60	90° Elbow - Plain End
4 - 48	90° Elbow - Bell End



# Heavy Pipe & Tubing

Haviland's heavy pipe and tubing has the strength, flexibility and endurance to fulfill most job requirements. Made of high-density polyethylene plastic, our tubing meets or exceeds ASTM F 405 and ASTM F 667 standards. Our tubing and pipe is available in 2" through 24" diameters in the lengths listed below.

| 6" x 100' Perf | | 3" x 250' Perf |



| 6" x 100' Sock | | 4" x 100' Solid | | 4" x 250' Sock |

Size	Length (ft)	Description	Stock
2"	100	Perf	
	100	Solid	
	500	Perf	
	500	Solid	
	5600	Sand *	
3"	10	Perf	
	10	Perf w/Coupler 10/Bundle	
	10	Solid	
	100	Perf	
	100	Solid	
	250	Perf	
	250	Solid	
	300	Perf	
	300	Solid	
	5600	Perf *	
5600	Sand *		
4"	10	Perf w/Bell 10/bundle	
	10	Solid w/Bell 10/bundle	
	10	Leach w/Bell 10/bundle	
	10	MI Leach w/Stripe & Bell 10/bundle	
	100	Perf	
	100	Solid	
	100	Leach	
	150	Perf	
	150	Solid	
	250	Yellow Solid	
	250	Co-Ex 416	
	250	Co-Ex 418	
	250	Co-Ex Sand	
	250	Co-Ex Solid	
	250	Co-Ex Staggered	
	250	Perf	
	250	Sand	
	250	Solid	
	250	Leach	
	3250	Co-Ex 416 *	
3250	Co-Ex 418 *		
3250	Extra Heavy Co-Ex 418*		
3250	Co-Ex Sand *		
3250	Extra Heavy Co-Ex Sand*		
3250	Co-Ex Staggered *		
3250	Extra Heavy Co-Ex Staggered*		
3250	Staggered *		
3250	Extra Heavy Staggered *		
3250	Sand *		
3250	Extra Heavy Sand*		
3250	Solid *		
3250	Leach*		

Size	Length (ft)	Description	Stock
5"	150	Perf	
	150	Solid	
	150	Leach	
	2150	Perf *	
	2150	Extra Heavy Perf*	
6"	2150	Sand *	
	2150	Solid *	N
	2150	Leach*	
	20	Perf	
	20	Solid	
	100	Perf	
	100	Solid	
	100	Leach	
	1600	Perf *	
	1600	Sand *	
8"	1600	Co-Ex Staggered *	
	1600	Extra Heavy Perf*	
	1600	Solid *	N
	1600	Leach*	
	20	Perf	
	20	Solid	
	620	Perf *	
	620	Sand *	
	620	Solid *	
	875	Perf *	
875	Sand *		
875	Solid *		
10"	20	Perf	
	20	Solid	
	580	Perf *	
	580	Sand *	
	580	Solid *	
12"	20	Perf	
	20	Solid	
	24	Solid	
	330	Perf *	
	330	Sand *	
15"	20	Solid *	
	20	Perf	
	20	Solid	
	24	Solid	
	24	Solid	
18"	20	Perf	
	20	Solid	N
24"	20	Solid (only)	

\* requires specialized handling equipment

# Smooth Flow Pipe

Smooth Flow pipe is a corrugated polyethylene pipe with a smooth interior. This combination provides a light weight, durable product for storm sewers, culverts, and many other applications where high strength and maximum flow are essential. Haviland Smooth Flow pipe is available with plain ends from 8" to 30" and with belled ends from 4" to 60". Smooth Flow pipe conforms to AASHTO M-252 and AASHTO M-294 specifications. An installation guide is available specifically for Smooth Flow pipe on our website. As shown below, 4" and 6" pipe can be ordered in pallets.



| 6" x 20' SF Solid |



| 8" x 20' SF Solid w/Bell |

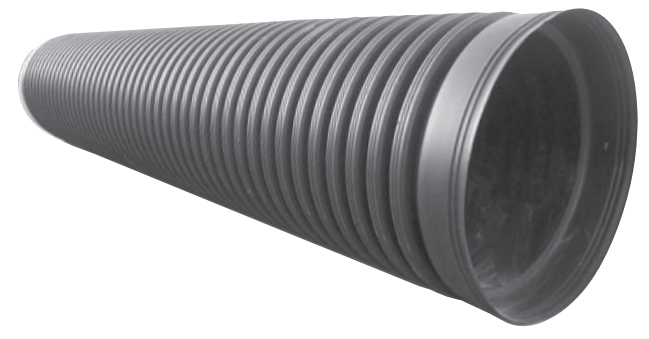
Size	Length (ft)	Description	Stock
4"	20	SF Perf w/ Bell	
	20	SF Sock w/ Bell	
	20	SF Solid w/ Bell	
	20	SF Solid w/ Bell F-477	
	20	WT	
6"	20	SF Perf w/ Bell	
	20	SF Sock w/ Bell	N
	20	SF Solid w/ Bell	
	20	SF Solid w/ Bell F-477	
	20	WT	
8"	20	SF Perf	
	20	SF Perf w/ Bell	
	20	SF Sock	N
	20	SF Sock w/ Bell	
	20	SF Solid	
	20	SF Solid w/ Bell	
	20	SF Solid w/ Bell F-477	
10"	20	WT	
	20	SF Perf	
	20	SF Perf w/ Bell	
	20	SF Sock	N
	20	SF Sock w/ Bell	
	20	SF Solid	
	20	SF Solid w/ Bell	
	20	SF Solid w/ Bell F-477	
	20	WT	
	20	WT	
12"	10	SF Perf w/ Bell	
	10	SF Sock w/ Bell	N
	10	SF Solid w/ Bell F-477	
	20	SF Perf	
	20	SF Perf w/ Bell	
	20	SF Sock	
	20	SF Sock w/ Bell	
	20	SF Solid	
	20	SF Solid w/ Bell F-477	
	20	WT	
15"	9.5	SF Solid w/ Bell F-477	
	9.5	SF Perf w/ Bell	
	9.5	SF Sock w/ Bell	N
	20	SF Perf	
	20	SF Perf w/ Bell	
	20	SF Sock	
	20	SF Sock w/ Bell	
	20	SF Solid	
	20	SF Solid w/ Bell F-477	
	20	SF Solid	
24	SF Solid		
30	SF Solid		
20	WT		



| 12" x 20' SF Solid |



| 18" x 20' SF Solid w/Bell & Spigot |



| 48" x 20' SF Solid w/Bell & Spigot |

Size	Length (ft)	Description	Stock
18"	10	SF Solid w/ Bell F-477	
	10	SF Perf w/ Bell	
	10	SF Sock w/ Bell	N
	20	SF Perf	
	20	SF Perf w/ Bell	
	20	SF Sock	
	20	SF Sock w/ Bell	
	20	SF Solid	
	20	SF Solid w/ Bell F-477	
	20	WT	
24"	9.25	SF Perf w/ Bell	
	9.25	SF Sock w/ Bell	N
	9.25	SF Solid w/ Bell F-477	
	20	SF Perf	
	20	SF Solid	
	20	SF Perf w/ Bell	
	20	SF Sock w/ Bell	N
30"	20	SF Solid w/ Bell F-477	
	24	SF Solid	
	30	SF Solid	
	20	WT	
	13.5	SF Perf w/ Bell	
	13.5	SF Solid w/ Bell F-477	
	20	SF Perf	N
36"	20	SF Perf w/ Bell	
	20	SF Solid	
	20	SF Solid w/ Bell F-477	
	20	WT	N
	20	WT	
42"	13	SF Perf w/ Bell	N
	13	SF Solid w/ Bell F-477	
	20	SF Perf w/ Bell	N
	20	SF Solid w/ Bell F-477	
	20	WT	N
48"	14.5	SF Perf w/ Bell	N
	14.5	SF Solid w/ Bell F-477	
	20	SF Perf w/ Bell	N
	20	SF Solid w/ Bell F-477	
	20	WT	N
60"	14.5	SF Solid w/ Bell F-477	
	20	SF Solid w/ Bell F-477	
	20	WT	N

